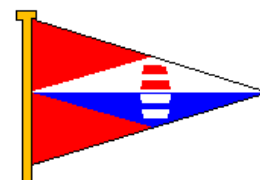


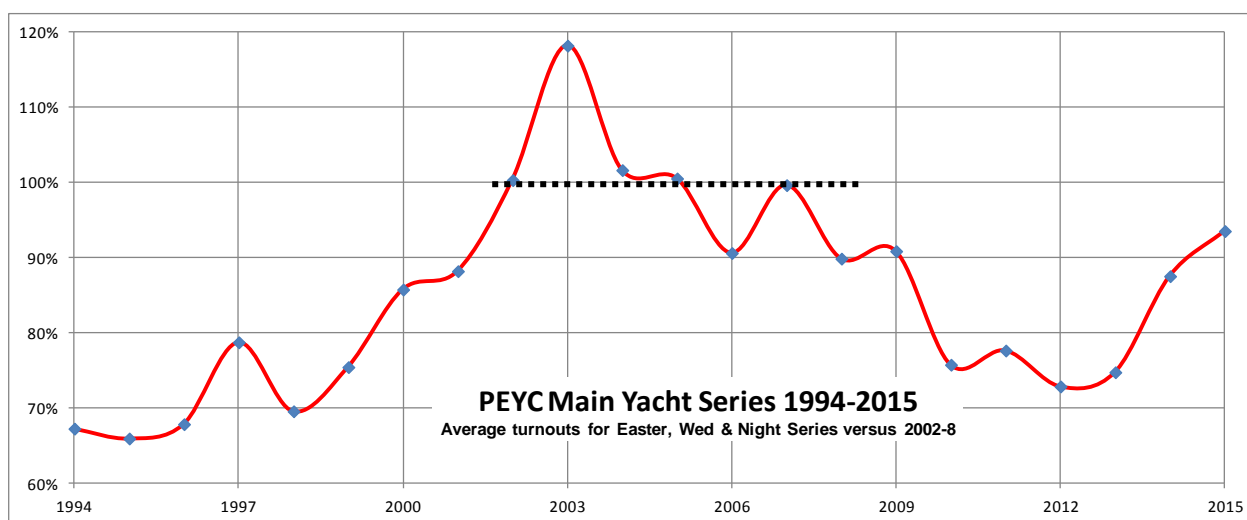
PEYC Yacht Racing Review - 2015



Main Series Turnouts:

Average Turnout / Series	2008	2009	2010	2011	2012	2013	2014	2015
Easter Yachts (Combined)	15.0	13.8	11.8	11.6	9.7	8.4	9.8	12.0
Wednesday A (Combined)	22.7	23.0	18.1	22.8	20.3	16.4	22.1	23.1
Wednesday B (Combined)	19.8	22.0	18.9	17.3	17.0	22.0	22.4	23.7
Night Series (Combined)	23.4	23.0	19.4	18.2	18.9	20.5	24.5	25.4

Average turnouts in the main yacht series continue to improve and have reached 94% of the average in our peak years 2002-2008. Overall, 40 different yachts have competed in these series in 2015.



Div-1/Div-2 Handicap Split:

Since the handicap split between Div-1 and Div-2 was reduced to 924/925 in 2013, Div-1 turnout has stayed constant while Div-2 has increased. Based on feedback from members, the Sailing Committee will review the arrangement of yacht divisions for 2016 to better balance the numbers.

Average Turnout / Series	2012	2013	2014	2015
Easter Yachts Div-1	6.7	n/a	n/a	n/a
Easter Yachts Div-2	3.0	n/a	n/a	n/a
Easter Yachts (Combined)	9.7	8.4	9.8	12.0
Wednesday A Yachts Div-1	12.8	7.4	9.4	9.1
Wednesday A Yachts Div-2	7.5	9.0	12.7	14.0
Wednesday A Yachts (Combined)	20.3	16.4	22.1	23.1
Wednesday B Yachts Div-1	11.3	7.2	8.6	9.0
Wednesday B Yachts Div-2	5.7	14.8	13.9	14.7
Wednesday B Yachts (Combined)	17.0	22.0	22.4	23.7
Night Series Yachts Div-1	13.6	9.0	9.5	9.6
Night Series Yachts Div-2	5.3	11.5	15.0	15.8
Night Series Yachts (Combined)	18.9	20.5	24.5	25.4

Jim Scott - PEYC Sailing Secretary - 27th Oct 2015