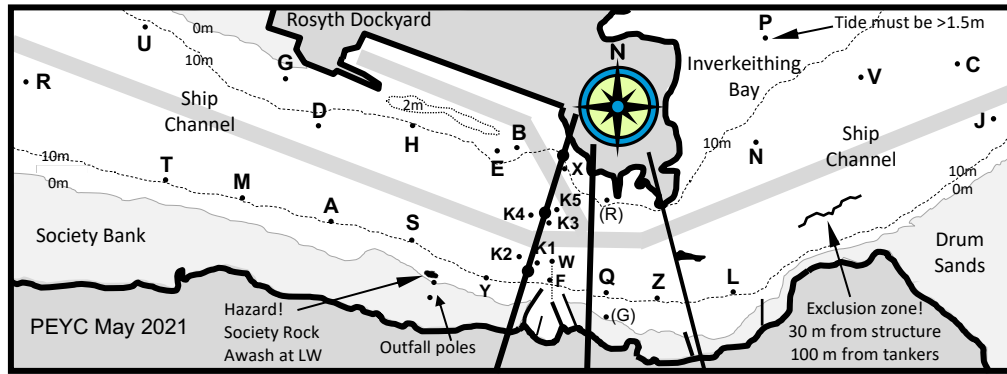


PEYC Mark Positions - May 2021



Ref	PEYC 2021 - Race Mark Nominal Positions	Latitude	Longitude
A	PEYC yellow conical race mark + flag	56 0.26	3 27.05
B	Rosyth east black/yellow cardinal buoy	56 0.69	3 25.17
C	No 17 green cat channel buoy	56 1.20	3 20.10
D	Dhu Craig green cat channel buoy	56 0.82	3 27.25
E	PEYC yellow conical race mark + flag	56 0.66	3 25.45
F	PEYC yellow conical race mark + flag	55 59.90	3 24.66
G	PEYC yellow spherical race mark	56 1.15	3 27.45
G (Dinghy)	PEYC yellow conical race mark + flag	55 59.62	3 23.95
H	PEYC red spherical race mark	56 0.81	3 26.20
J	No 16 red cat channel buoy	56 0.88	3 19.58
K1	Yellow channel buoy	55 59.99	3 24.84
K2	Yellow channel buoy	56 0.03	3 25.02
K3	Yellow channel buoy	56 0.03	3 24.69
K4	Yellow channel buoy	56 0.26	3 24.87
K5	Yellow channel buoy	56 0.30	3 24.64
L	PEYC yellow conical race mark + flag	55 59.79	3 22.72
M	PEYC red spherical race mark	56 0.36	3 27.95
N	No 19 green cat channel buoy	56 0.70	3 22.40
P	St David's Bay light pillar	56 1.35	3 22.10
Q	PEYC white conical race mark + flag	55 59.80	3 23.94
R	Blackness red cat channel buoy	56 1.07	3 30.22
R (Dinghy)	PEYC yellow conical race mark + flag	56 0.36	3 24.05
S	PEYC red spherical race mark	56 0.18	3 26.22
T	PEYC yellow conical race mark + flag	56 0.46	3 28.60
U	Limekilns yellow outfall buoy	56 1.42	3 29.05
V	No 1 mooring buoy off Downing Point	56 1.11	3 21.15
W	PEYC red conical race mark	56 0.00	3 24.66
X	Rosyth No1 green cat buoy	56 0.55	3 24.56
Y	PEYC yellow conical race mark + flag	55 59.98	3 25.29
Z	PEYC yellow conical race mark + flag	55 59.78	3 23.40
Ref	Additional Trophy Race Marks	Latitude	Longitude
C3	No 3 green cat channel buoy	56 3.23	3 6.09
C5	No 5 green cat channel buoy	56 3.18	3 7.88
C7	No 7 green cone channel buoy	56 2.79	3 10.96
C9	No 9 green cat channel buoy	56 2.36	3 13.47
C11	No 11 green cat channel buoy	56 2.08	3 15.24
C13	No 13 green cat channel buoy	56 1.77	3 17.04
C15	No 15 green cat channel buoy	56 1.39	3 18.95
E Gunnet	East cardinal buoy	56 1.42	3 10.38
Gmouth	Grangemouth yellow NE buoy	56 2.46	3 39.20
Herwit	Herwit green cone buoy	56 1.05	3 6.49
Leith AP	Leith approach red cat buoy	55 59.95	3 11.52
Tancred	Red cat channel buoy	56 1.58	3 31.92