

## PEYC Sunday Yacht Courses Apr 2022 – Pier Starts

Mark rounding key; Upper Case to Port; Lower case to Starboard; Rd length (nm)

These races will be run with a Racing OOD.

Likely course for the day will be displayed on [www.peyc.org.uk/next-race/](http://www.peyc.org.uk/next-race/)

Courses will be reconfirmed and announced on VHF before the start.

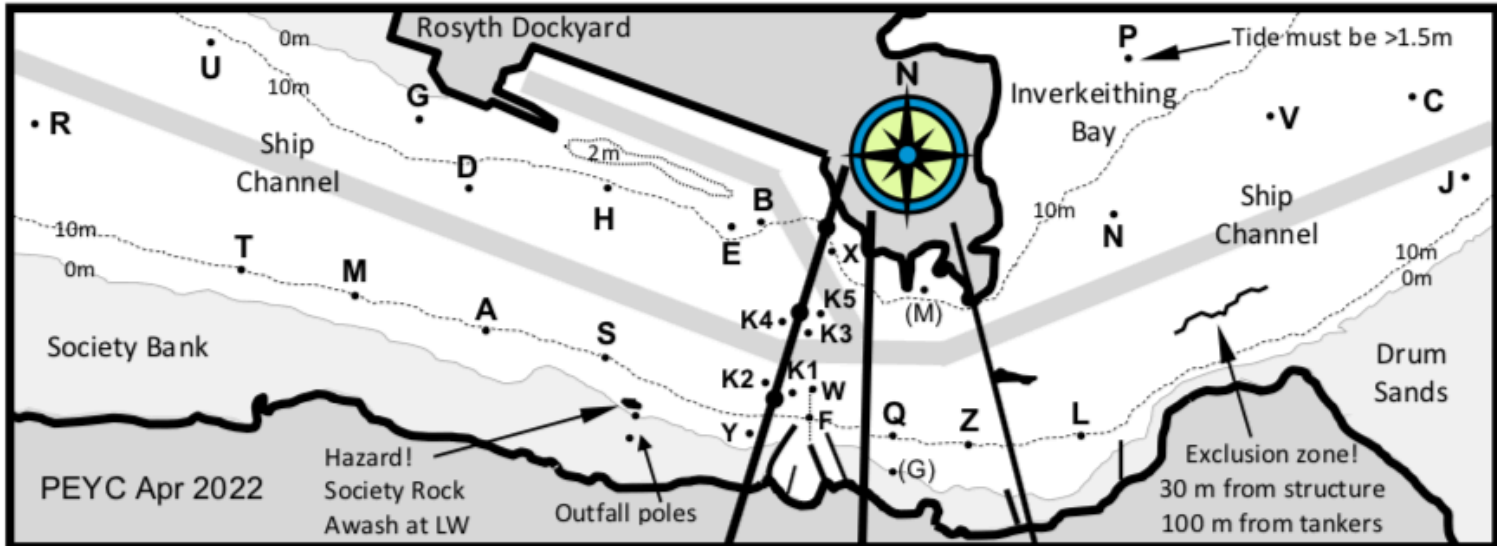
An automated lights and horn system may be in operation as an advisory.

You must either use raceQs or take your own lap and finish times.

If not using raceQs then email times to [peyc.racing@gmail.com](mailto:peyc.racing@gmail.com) or use the form at

[www.peyc.org.uk/finishing/](http://www.peyc.org.uk/finishing/)

N.B Div 1 requires 1.5m minimum tide height to safely round mark P



### W-wind Race Box Courses

Start Line: Mark W Lap and Finish Line: Mark F

- 150 t g S l f (7.8) s l f (4.0) w Z f (1.6)
- 151 m n l f (7.2) s x Z f (3.6) w Z f (1.6)
- 152 m h k1 l f (6.4) A q f (3.5) w Z f (1.6)
- 153 m d l f (6.3) s q f (2.7) w Z f (1.6)
- 154 m z f (5.2) x l f (3.0) w Z f (1.6)
- 155 s h Z f (4.1) s Z f (3.3) w Z f (1.6)
- 156 s Z f (3.2) e Z f (3.0) w Z f (1.6)
- 157 s q f (2.6) e Z f (3.0) w Z f (1.6)
- 158 s q f (2.6) s Z f (3.3)
- 159 s q f (2.6) s q f (2.7)

### SW-wind Race Box Courses

Start : Mark W Lap : Mark H ; Finish Mark E

Line transit North South for H and E lap times

- 160 s e a G T G T M D M h (9.0) A h (1.5) A e s e
- 161 s e a G T G T M h (7.8) A h (1.5) A e s e (3.0)
- 162 s e a D M D M h (6.0) A h (1.5) A b s e (3.0)
- 163 s e a G T M D M h (6.0) A h (1.5) A e (1.7)
- 164 s e a D M h (4.8) a h (1.5) a b s e (3.3)
- 165 s e a D M D M h (6.0) A e (1.7) s e (1.3)
- 166 s e s D M h (4.7) A h (1.5) A e (1.7)
- 167 s w s h (4.3) A e (1.7) S e (1.3)
- 168 s B s h (3.1) A h (1.5) A e (1.3)
- 169 s B s a e (3.9) s e (1.3)

### E Wind Race Box Courses

Start Line: Mark W Lap and Finish Line: Mark F

- 170 J n v f (7.7) x n l f (4.1) w Z f (1.6)
- 171 J v c f (7.4) w n l f (3.6) w Z f (1.6)
- 172 v j N f (6.3) x n f (3.6) w Z f (1.6)
- 173 Z a l f (6.3) k2 l f (2.3) w Z f (1.6)
- 174 Z a Z f (5.6) w l f (2.3) w Z f (1.6)
- 175 Z s l f (5.5) w Z f (1.6) w Z f (1.6)
- 176 Z s Z f (4.7) w Z f (1.6) w Z f (1.6)
- 177 l k2 Z f (4.1) w Z f (1.6) w Z f (1.6)
- 178 l f (2.2) w l f (2.2) w Z f (1.6)
- 179 l f (2.2) w Z f (1.6) w Z f (1.6)

### NE-wind Race Box Courses

Start : Mark W Lap : Mark F or H ; Finish Mark E or F

Line transit North South for H and E lap times

- 180 P L P f (7.4) w L N f (3.6) w Z f (1.6)
- 181 c f (5.7) w v f (4.7) w Z f (1.6)
- 182 v j l f (6.3) w N f (3.0) w Z f (1.6)
- 183 p v l f (5.3) w N f (3.0) w Z f (1.6)
- 184 n B s m e (6.5) s e (1.3) s e (1.3)
- 185 n B s a h (5.2) a h a h (3.0) e s e (1.7)
- 186 n w B s a h (5.6) e s e (1.7)
- 187 Z B a h (3.9) s e s e (1.7)
- 188 n f (2.9) w Z f (1.6) w Z f (1.6)
- 189 n f (2.9) w Z f (1.6) w q f (1.0)