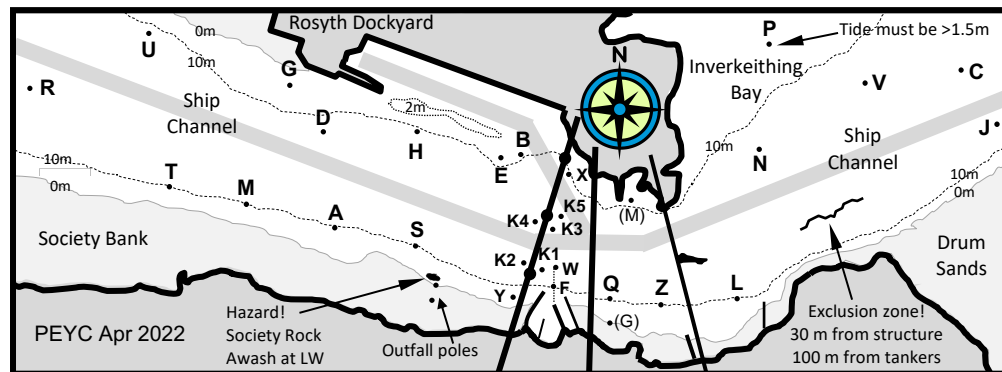


PEYC Yacht Courses Apr 2022 - Committee Boat Start & Finish

Mark rounding key: Upper case to Port; Lower case to Starboard; Rd length (nm)

W-wind West Area Courses:	
Start at mark E	Finish at mark E
00	R E D E (7.4) T A E (3.6) H E (0.9)
01	R H G E (7.0) m d S E (3.5) H E (0.9)
02	t H G M E (6.4) M S E (3.0) H E (0.9)
03	r g A E (6.1) D A E (2.6) H E (0.9)
04	R E (5.4) D S E (2.5) H E (0.9)
05	t g A S E (4.8) D E (2.0) H E (0.9)
06	m g S E (4.1) D E (2.0) H E (0.9)
07	m d S E (3.5) H S E (1.8) H E (0.9)
08	m d S E (3.5) H E (0.9) H E (0.9)
09	D E (2.0) H E (0.9) H E (0.9)
WSW-wind West Area Courses:	
Start at mark E	Finish at mark E
10	a H m U R e (7.5) a m d S e (3.6) a e
11	a D t U R e (6.9) a g e (3.1) a e (1.9)
12	a D t u M S e (6.2) a g e (3.1) a e
13	a D t u e (5.6) a h S e (3.1) a e (1.9)
14	a D t g S e (5.2) a h e (2.2) a e (1.9)
15	a D t g e (4.7) a h e (2.2) a e (1.9)
16	a H M e (4.3) a e (1.9) a e (1.9)
17	a m d S e (3.6) a e (1.9) a e (1.9)
18	a d e (2.6) a e (1.9) a e (1.9)
19	a e (1.9) a e (1.9) a e (1.9)
SW-wind West Area Courses:	
Start at mark E	Finish at mark E
20	s H a G t u M e (7.5) s H a d e (3.7) s e
21	s H A H G T d A e (6.9) s m d e (3.2) s e
22	s G t u e (5.9) s D M e (3.5) s e (1.3)
23	s H a G T e (5.8) s d e (2.5) s e (1.3)
24	s H a D m g e (5.4) s a e (2.1) s e (1.3)
25	s G T e (4.6) s a h e (2.3) s e (1.3)
26	s H a d e (3.7) s d e (2.5) s e (1.3)
27	s D M h e (3.6) s h e (1.8) s e (1.3)
28	s H A e (3.1) s e (1.3) s e (1.3)
29	s h e (1.8) s e (1.3) s e (1.3)

E-wind West Area Courses:	
Start at mark H	Finish at mark E
30	e s G t U R e (7.7) s D M e (3.5) h e
31	e s D m U T e (6.6) T e (3.7) h e
32	e s G R e (6.5) a m h e (3.0) h e
33	e s D m u e (5.9) m e (2.8) h e
34	e a G T e (5.1) m e (2.8) h e (0.9)
35	e a m a m d e (4.5) s d e (2.5) h e
36	e s a H D e (4.0) D e (2.0) H e (0.9)
37	e a g e (3.6) s h e (1.7) h e (0.9)
38	e s m d e (3.6) h e (0.9) h e (0.9)
39	e d e (2.8) h e (0.9) h e (0.9)
ENE-wind West Area Courses:	
Start at mark A	Finish at mark E
40	e s D r u A e (7.5) s D M A e (3.6) A e
41	e s D T h A e (6.6) s D M A e (3.6) A e
42	e s D t g A e (6.2) s H A e (3.1) A e
43	e s t d A e (5.5) s H A e (3.1) A e (1.9)
44	e s D T A e (5.3) D A e (2.6) A e (1.9)
45	E H T A E (4.8) H A E (2.2) A E (1.9)
46	E D M A E (4.0) H A E (2.2) A E (1.9)
47	E D A E (3.5) A E (1.9) A E (1.9)
48	e s a e (3.0) a e (1.9) a e (1.9)
49	E A E (2.9) A E (1.9) A E (1.9)



PEYC Yacht Courses Apr 2022 - Main Pier Start & Finish

Mark rounding key: Upper case to Port; Lower case to Starboard; Rd length (nm)

NB: Div-1 requires 1.5m minimum tide height to safely round mark P

W-wind Race Box Courses:	
Start line: mark W	Finish line: mark F
50	m h n l f (7.4) s x z f (3.5) k1 w z f
51	t g A e q f (6.7) A q f (3.6) k1 w Z f
52	m h l f (6.2) s e q f (3.2) k1 w Z f
53	m h x z f (5.5) s x q f (3.2) k1 w z f
54	a e l f (5.2) s q f (2.7) w Z f (1.4)
55	s n f (4.6) x z f (2.3) w z f (1.4)
56	a h q f (4.1) x q f (1.9) w Z f (1.4)
57	s e z f (3.6) k2 w z f (1.8) w q f (1.0)
58	s x q f (3.2) w Z f (1.4) w q f (1.0)
59	k2 w Z f (1.8) w Z f (1.4) w q f (1.0)
SW-wind Race Box Courses:	
Start line: mark W	Finish line: mark F
60	s H M n f (7.4) e l f (3.7) k1 w Z f (1.6)
61	s E A x n f (6.9) s x z f (3.5) k1 w z f
62	s E A x l f (6.3) s x q f (3.2) k1 w Z f
63	s E A x z f (5.6) s x q f (3.2) k1 w z f
64	s E A x z f (5.6) x z f (2.3) w z f
65	s E A q f (4.7) x z f (2.3) w z f (1.4)
66	a e z f (4.4) k2 w z f (1.8) w z f (1.4)
67	s e z f (3.6) k2 w z f (1.8) w q f
68	s x q f (3.2) w Z f (1.4) w q f (1.0)
69	k2 w Z f (1.8) k1 w q f (1.1) w q f

E-wind Race Box Courses:	
Start line: mark W	Finish line: mark F
70	J v c f (7.3) w n l f (3.6) w Z f (1.4)
71	J P f (6.6) w n l f (3.6) w Z f (1.4)
72	J V l f (6.6) w n f (3.0) w Z f (1.4)
73	C f (5.7) w n f (3.0) w Z f (1.4)
74	V P f (5.0) w n f (3.0) w Z f (1.4)
75	V f (4.6) k1 w L f (2.4) w Z f (1.4)
76	p f (4.3) x q f (1.9) w Z f (1.4)
77	L N f (3.5) x q f (1.9) w q f (1.0)
78	N f (2.9) w Z f (1.4) w q f (1.0)
79	L f (2.2) w q f (1.0) w q f (1.0)
NE-wind Race Box Courses:	
Start line: mark W	Finish line: mark F
80	p L V f (7.6) w L N f (3.5) w Z f
81	p j f (6.6) w n l f (3.5) w Z f (1.4)
82	v j l f (6.3) w n f (3.0) w Z f (1.4)
83	p v l f (5.4) w n l f (3.5) w Z f (1.4)
84	p v f (5.0) w n f (3.0) w Z f (1.4)
85	p l f (4.8) w l f (2.2) w Z f (1.4)
86	p f (4.3) x q f (1.9) w Z f (1.4)
87	n l f (3.5) x q f (1.9) w q f (1.0)
88	N f (3.0) w Z f (1.4) w q f (1.0)
89	L f (2.2) w q f (1.0) w q f (1.0)