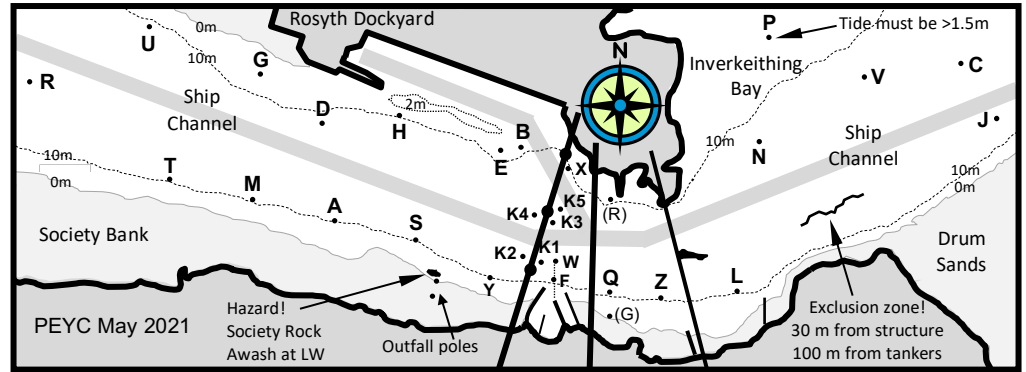


PEYC Yacht Courses May 2021 - Committee Boat Starts

Mark rounding key: Upper case to Port; Lower case to Starboard; Rd length (nm)

W-wind West Area Courses: Start at mark E; Finish at mark E	
00	t G r u M S E (7.8) t d S E (4.2) H E
01	r u T g A E (7.3) T S E (3.9) H E
02	r u T d A E (6.9) m d S E (3.5) H E
03	t H G M E (6.4) M S E (3.0) H E (0.9)
04	r g A E (6.1) D A E (2.6) H E (0.9)
05	R E (5.4) D S E (2.5) H E (0.9)
06	t g A S E (4.8) D E (2.0) H E (0.9)
07	m g S E (4.1) D E (2.0) H E (0.9)
08	m d S E (3.5) H S E (1.8) H E (0.9)
09	m d S E (3.5) H E (0.9) H E (0.9)
WSW-wind West Area Courses: Start at mark E; Finish at mark E	
10	a H m U R E (7.5) a D T E (4.3) a E
11	a H m U R E (7.5) a m d S E (3.6) a E
12	a D t U R E (6.9) a g E (3.1) a E
13	a D t u M S E (6.2) a g E (3.1) a E
14	a D t u E (5.6) a h S E (3.1) a E (1.9)
15	a D t g S E (5.2) a h E (2.2) a E (1.9)
16	a D t g E (4.7) a h E (2.2) a E (1.9)
17	a H M E (4.3) a E (1.9) a E (1.9)
18	a m d S E (3.6) a E (1.9) a E (1.9)
19	a d E (2.6) a E (1.9) a E (1.9)
SW-wind West Area Courses: Start at mark E; Finish at mark E	
20	s H a G t u M e (7.5) s H a D M e (4.7) s e
21	s H a G t u M e (7.5) s H a d e (3.7) s e
22	s H A H G T d A e (6.9) s m d e (3.2) s e
23	s D M D G t u e (6.3) s H A e (3.1) s e
24	s H a G T e (5.8) s d e (2.5) s e (1.3)
25	s H a D m g e (5.4) s a e (2.1) s e
26	s G T e (4.6) s a h e (2.3) s e (1.3)
27	s H a d e (3.7) s d e (2.5) s e (1.3)
28	s D M h e (3.6) s h e (1.8) s e (1.3)
29	s H A e (3.1) s e (1.3) s e (1.3)

E-wind West Area Courses: Start at mark H; Finish at mark E	
30	e s D r g T e (7.8) a D T e (4.3) h e
31	e s G t U R e (7.7) s D M e (3.5) h e
32	e s D m U T e (6.6) T e (3.7) h e
33	e s G R e (6.5) a m h e (3.0) h e
34	e s D m u e (5.9) m e (2.8) h e
35	e s H T e (5.1) a d e (2.6) H e (0.9)
36	e a m a m d e (4.5) s d e (2.5) h e
37	e s a H D e (4.0) D e (2.0) H e (0.9)
38	e a g e (3.6) s h e (1.7) h e (0.9)
39	e s m d e (3.6) h e (0.9) h e (0.9)
ENE-wind West Area Courses: Start at mark A; Finish at mark E	
40	e s r u T d A e (8.2) s H M A e (3.9) A e
41	e s D r u A e (7.5) s D M A e (3.6) A e
42	e s r u A e (6.7) s D M A e (3.6) A e
43	e s D t g A e (6.2) s H A e (3.1) A e
44	e s t d A e (5.5) s H A e (3.1) A e
45	e s D T A e (5.3) D A e (2.6) A e
46	E H T A E (4.8) H A E (2.2) A E (1.9)
47	E D M A E (4.0) H A E (2.2) A E
48	E D A E (3.5) A E (1.9) A E (1.9)
49	E A E (2.9) A E (1.9) A E (1.9)



PEYC Yacht Courses May 2021 - Main Pier Start & Finish

Mark rounding key: Upper case to Port; Lower case to Starboard; Rd length (nm)

NB: Div-1 requires 1.5m minimum tide height to safely round mark P

W-wind Pier Start Courses: Main Pier start & finish line at mark W	
50	t g A e l w (8.0) s l w (4.0) q w
51	m h n l w (7.4) s x z w (3.6) q w
52	t g A e l w (6.8) A q w (3.6) q w (0.9)
53	m h l w (6.3) s e q w (3.2) q w (0.9)
54	m h x z w (5.7) x l w (2.9) q w (0.9)
55	a e l w (5.2) s q w (2.7) q w (0.9)
56	s n w (4.7) x z w (2.3) q w (0.9)
57	a h q w (4.2) x q w (1.8) q w (0.9)
58	a q w (3.6) x q w (1.8) q w (0.9)
59	s x q w (3.2) Z w (1.5) q w (0.9)
SW-wind Pier Start Courses: Main Pier start & finish line at mark W	
60	s E a H M x z w (8.0) s L w (4.0) q w
61	s H M N w (7.4) s x z w (3.6) q w
62	s E A x N w (6.9) s z w (3.3) q w
63	s E A x l w (6.3) s x q w (3.2) q w
64	s E A x z w (5.7) x l w (2.9) q w (0.9)
65	s E A x z w (5.7) L w (2.2) q w (0.9)
66	s E A q w (4.8) x z w (2.3) q w (0.9)
67	a h q w (4.2) L w (2.2) q w (0.9)
68	s x z w (3.6) x q w (1.8) q w (0.9)
69	s x q w (3.2) Z w (1.5) q w (0.9)

E-wind Pier Start Courses: Main Pier start & finish line at mark W	
70	J n v w (7.6) x n l w (4.1) q w (0.9)
71	J v c w (7.3) n l w (3.5) q w (0.9)
72	J P w (6.6) n l w (3.5) q w (0.9)
73	v j N w (6.3) x N w (3.5) q w (0.9)
74	C w (5.7) x l w (2.9) q w (0.9)
75	V P w (5.0) x l w (2.9) q w (0.9)
76	V w (4.5) x z w (2.3) q w (0.9)
77	P w (4.2) x q w (1.8) q w (0.9)
78	L N w (3.5) x q w (1.8) q w (0.9)
79	N w (3.0) Z w (1.5) q w (0.9)
NE-wind Pier Start Courses: Main Pier start & finish line at mark W	
80	p L V w (7.6) V w (4.5) q w (0.9)
81	p L V w (7.6) L N w (3.5) q w (0.9)
82	p j w (6.6) n l w (3.5) q w (0.9)
83	v j l w (6.4) N w (2.9) q w (0.9)
84	p v l w (5.4) N w (2.9) q w (0.9)
85	p v w (5.0) N w (2.9) q w (0.9)
86	p l w (4.8) l w (2.2) q w (0.9)
87	p w (4.2) x q w (1.8) q w (0.9)
88	n l w (3.5) x q w (1.8) q w (0.9)
89	N w (2.9) Z w (1.5) q w (0.9)