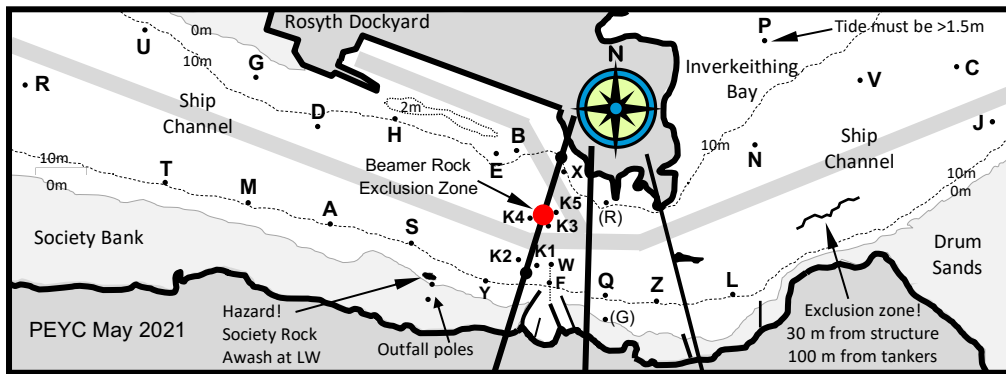


PEYC Yacht Night Courses Sept 2021 - Main Pier Start & Finish

Mark rounding key: Upper case to Port; Lower case to Starboard; Rd length (nm)

NB: Div-1 requires 1.5m minimum tide height to safely round mark P



| W-wind Pier Start Night Courses: | |
|---|--|
| Pier start line at mark W & finish line at mark F | |
| 100 | s B D l f (6.7) k2 n f (3.3) w z f (1.6) |
| 101 | d n f (6.1) k2 n f (3.3) w z f (1.6) |
| 102 | s B D z f (6.0) k2 w l f (2.6) w z f (1.6) |
| 103 | d l f (5.5) k2 x z f (2.6) w z f (1.6) |
| 104 | s n l f (5.3) w l f (2.3) w z f (1.6) |
| 105 | s n f (4.7) w l f (2.3) w z f (1.6) |
| 106 | s x l f (4.3) k2 w z f (1.9) w z f (1.6) |
| 107 | s b z f (3.7) k2 w z f (1.9) w z f (1.6) |
| 108 | s w z f (3.2) x q f (1.9) w z f (1.6) |
| 109 | s x q f (3.1) w z f (1.6) w z f (1.6) |

| E-wind Pier Start Night Courses: | |
|---|--|
| Pier start line at mark W & finish line at mark F | |
| 120 | J P f (6.6) x n f (3.5) w z f (1.6) |
| 121 | p l B K2 F (6.3) N K1 F (3.2) Z W K1 F (1.7) |
| 122 | j f (6.0) b z f (2.9) w z f (1.6) |
| 123 | L D F (5.6) Z X K2 F (2.6) Z W K1 F (1.7) |
| 124 | n l B K2 F (5.0) Z X K2 F (2.6) Z W K1 F |
| 125 | p l f (4.8) k2 w z f (1.9) w z f (1.6) |
| 126 | n l X K2 F (4.5) Z W K2 F (1.9) Z W K1 F |
| 127 | L N f (3.5) w L f (2.3) w z f (1.6) |
| 128 | N K2 F (3.4) Z W K1 F (1.7) Z W K1 F (1.7) |
| 129 | n f (3.0) w z f (1.6) w z f (1.6) |

Notes

Sailing after dark adds an extra dimension to yacht racing at PEYC but requires you to be properly equipped and constantly alert to other yachts in your vicinity. Since we race across the shipping channels, yachts must display navigation lights that comply with IRPCAS regulations; 'glow sticks' are not acceptable and you will be disqualified if the Race Officer regards your lights as inadequate. While racing, lifejackets or buoyancy aids must be worn by all crew members and man-overboard equipment kept close to hand. SI 7.3 reminds you about giving adequate space to other yachts when changing course after sunset; aggressive luffing causing collisions may be penalised! PEYC race marks W, F, Q, Z & L will be fitted with flashing lights (~1-sec interval) that should be visible from 200+m, but you should plot their positions to ensure you find them. Finally, don't forget to identify yourself to the Race Officer on VHF Chan 77 as you complete each round, or when retiring from the race.

Extract from PEYC Sailing Instructions - Apr 2021 & Amendments 2021/3 & 2021/4

Section 7: Yacht Twilight & Night Series

- 7.1 In the Twilight & Night Series, yacht sailors must wear a correctly fitted lifejacket or personal buoyancy aid, complying with the relevant EN standard, including a personal light. This amends RRS40. A Dan buoy or Horseshoe buoy with an attached automatic light must be available near the cockpit for man-overboard situations. Auto-inflation lifejackets and harnesses are strongly recommended.
- 7.2 After sunset, yachts must show full navigation lights (Port, Starboard & Stern, or Tri-colour) as prescribed by IRPCAS, and must retire if they fail. Yachts with inadequate lights, in the opinion of the Race Officers, will be disqualified without a hearing. This amends RRS 63.1.
- 7.3 Competitors luffing after sunset are reminded of their obligations, under RRS 16.1 Changing Course, that 'the space a boat needs while manoeuvring promptly in a seamanlike way' is always much more at night and that they should adjust their close quarter manoeuvring accordingly.
- 7.4 Yachts must identify themselves on VHF Chan 77 as they approach mark F at the end of each round.
- 7.5 Yachts must not obscure the finish line by re-crossing it after finishing.
- 7.6 Yachts retiring must inform the Race Officer either by hailing or by radio on Channel 77.
- 7.7 The PEYC race box emergency mobile phone number is: 07942 234536.
- 7.8 For safety during these series, marks K3, K4 & K5 define an exclusion zone around the Beamer Rock.